

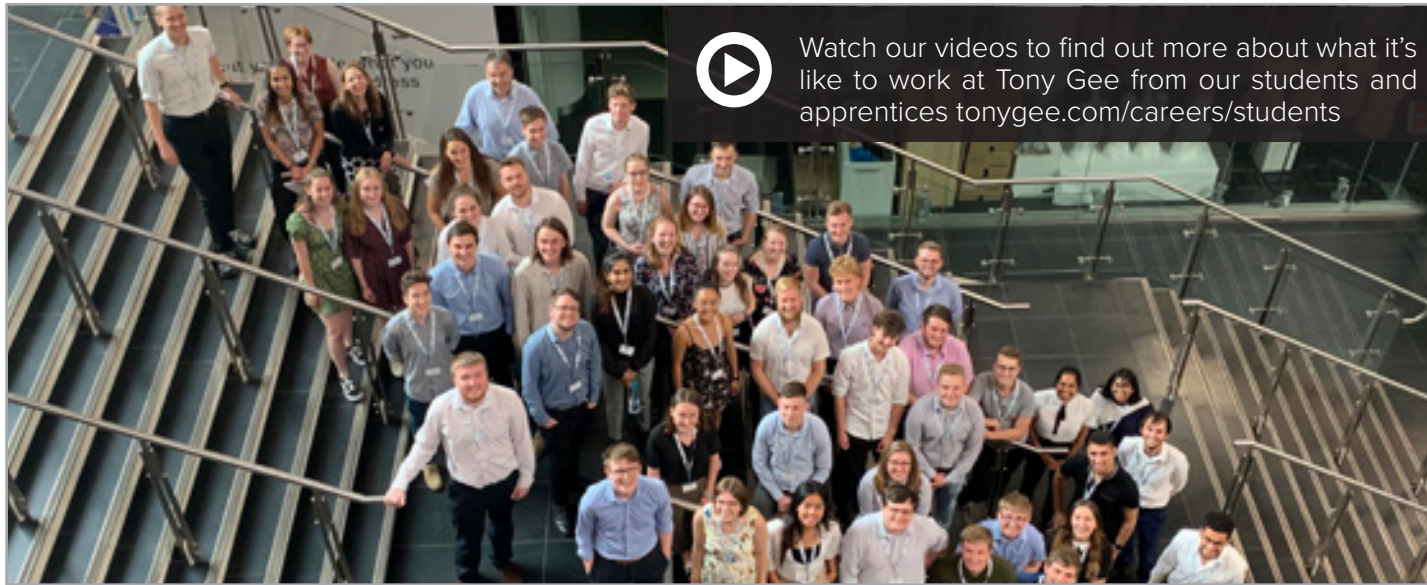
Foundations

Welcome to Foundations, a publication written by our students and apprentices to let you know more about what it's like to work with Tony Gee and Partners as an Undergraduate Engineer or an Apprentice.

Who are Tony Gee and Partners?

Tony Gee is a practice of Civil, Structural and Geotechnical design engineers providing specialist technical services to the worldwide construction industry. We strive for innovation and pride ourselves on the satisfaction of clients – providing them with efficient designs, clearly presented on time.

We are strongly committed to supporting and training the whole team, encouraging all to meet their full potential.



Students and Apprentices at Tony Gee

Currently there are around 450 staff working at Tony Gee worldwide, approximately 10% of whom are civil engineering students from a wide variety of universities and apprentices.

All sponsored students undertake a work placement during their summer vacation. Whichever team you join, you can be sure that there will be another student working close by, making it easier to settle in and ask as many questions as needed. Students will slot into live project teams and will work alongside staff of all levels.

Tony Gee is part of the Technician Apprenticeship Consortium (TAC) and is involved in the development of a framework of learning for those who wish to go into engineering but do not want to go to university. Our apprentices split their time between working on projects and studying at college one day per week.

What will you gain from your placement?

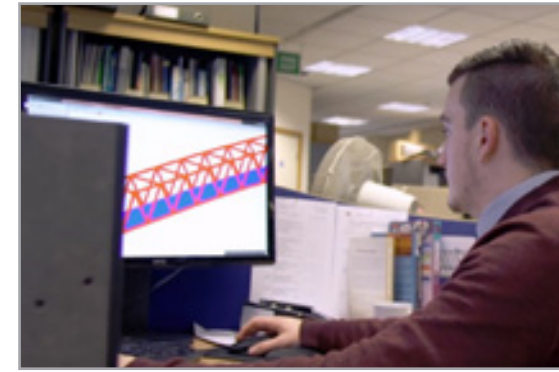
At Tony Gee we involve every member of the design team, allowing you to be 'hands-on' in all forms of work. Depending on your office location, you have the opportunity to work in all of the groups at Tony Gee including Highways, Structures, Rail, Geotechnics, Marine and Special Projects.

This experience proves invaluable to your development as a civil engineer and puts you firmly on the ladder to professional accreditation.

Aside from the work there are plenty of other activities to keep you occupied. Regular socials are arranged including trips to the Comedy Store, go-karting, five-a-side football tournaments and fund-raising events for our chosen charity RedR.



Life at Tony Gee



Jason is now in year three of a degree apprenticeship after successfully completing his level 3 apprenticeship in Civil Engineering at South Thames College. Here we find out a bit more about his time his current studies and his journey with us.

What first attracted you to the degree apprenticeship scheme?

As a previous student at South Thames College, I was given a talk from Kingston University representatives about the course. I was attracted to the degree apprenticeship because I liked the idea of being able to continue earning a salary working for Tony Gee, whilst having the opportunity to work towards my degree. Being a father of twins, I wouldn't have been able to afford to go to university and further develop my career as I am doing today.

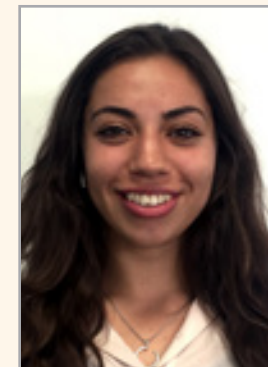
Tell us a little bit about the work-based modules you study and your involvement with the Institution of Civil Engineering (ICE)?

The work based module I am doing is applicable to what I do at work. This makes the content much more interesting to study, as it means I can apply this knowledge to make me more competent in my working environment. Currently I am learning about BIM (Building Information Modelling) in further depth than I previously knew about it. I am currently in the process of applying for professional EngTech status with the ICE.

Tell us more about your job at Tony Gee?

My main responsibility at work is to produce accurate drawings and models using software such as Revit and AutoCAD, that provide detailed information for the construction team on site to build from. In addition to this, I have taken on management responsibilities such as writing licence management scripts to reduce the overuse of Bentley software licences at Tony Gee. I also provide a lot of support for the BIM Manager. I am really proud of my career trajectory at this point and I am gaining fantastic experience on some highly technical and high profile projects. I undertook the role as BIM lead on a major viaduct post tensioning scheme in Exeter.

I was an integral part of the team and this led to me taking on further BIM Lead responsibility on the £225m Luton DART project. Tony Gee is the Design Lead and as such I have additional responsibility in terms of managing external parties and being the first port of call for all BIM related enquiries.



Q&A Louiza is now a part of Tony Gee's Rail Team since graduating from the University of Surrey after being a sponsored student with Tony Gee from the first year of her degree

How were you introduced to working at Tony Gee?

I was matched with Tony Gee in my first year at university. I completed my Professional Training Year in the Rail Group at the head office in Esher and then decided to remain in rail after graduation.

What kind of support have you received while working at Tony Gee?

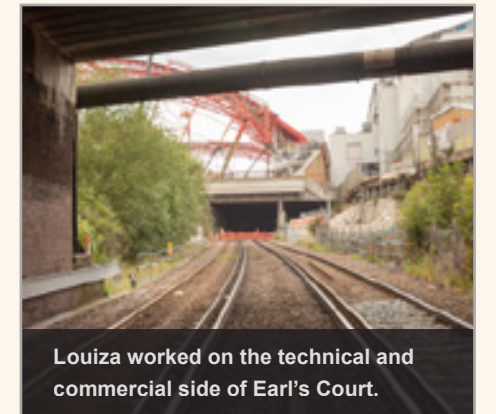
From my first encounter it was evident to me that Tony Gee was a very friendly place to work in and I felt at ease instantly. The open plan office makes it easy to communicate with people and made the working area less intimidating. There was also the chance to be involved in all different scopes of the projects.

Where do you see your career in the near future?

I am working towards becoming chartered, I have recorded all the projects that I have been involved in over the past few years and I am now working on relating my experiences to the ICE attributes. As Tony Gee has a diverse range of employees, I was able to develop my social skills in the way that I communicated and addressed each individual at the company. My technical ability has also improved and I have also been able to explore the commercial side of projects which is something that was not taught extensively at university.

What has been your favourite project to work on and why?

I was heavily involved in the Earl's Court Rail line cover project during my placement and exercised technical ability along with commercial skills. This project heavily influenced the modules that I picked for my masters year at university and gave me more clarity on what I wanted to do.



Want to find out more?

Speak to Gareth Drought

Email: gareth.drought@tonygee.com

Tel: 01372 461600



@TonyGeeLLP



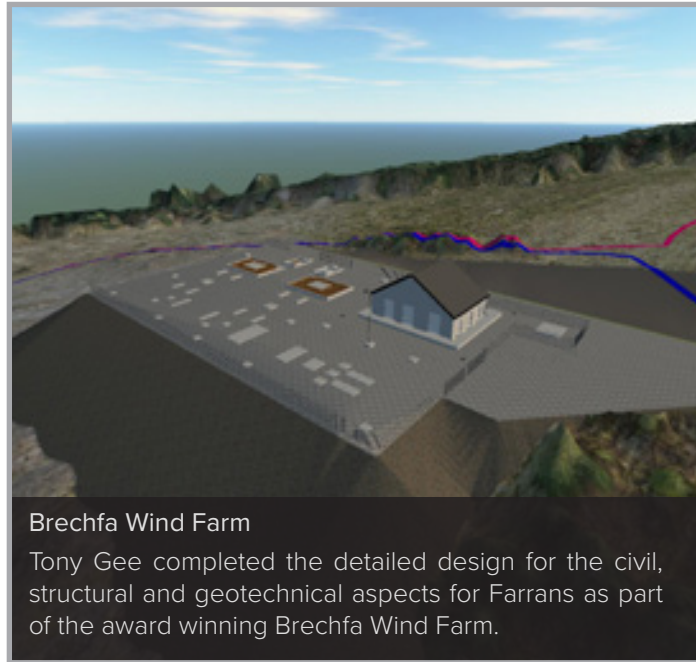
Follow us on LinkedIn

Tony Gee Projects

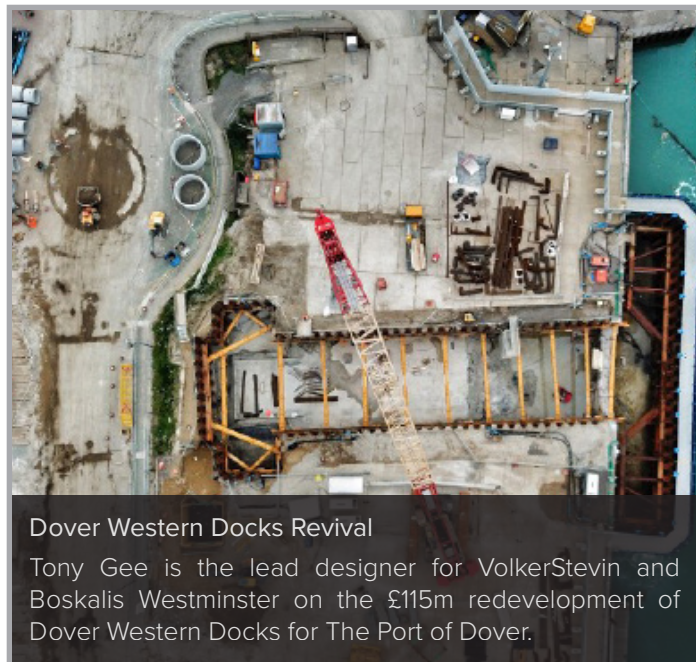
Tony Gee is an international consultancy, and while the majority of our work takes place in the UK, the business also completes a number of projects around the globe. Students will be based in one of our seven UK offices and stationed in different technical groups, giving experience in a variety of fields. Below is a selection of the type of projects you could be involved with.



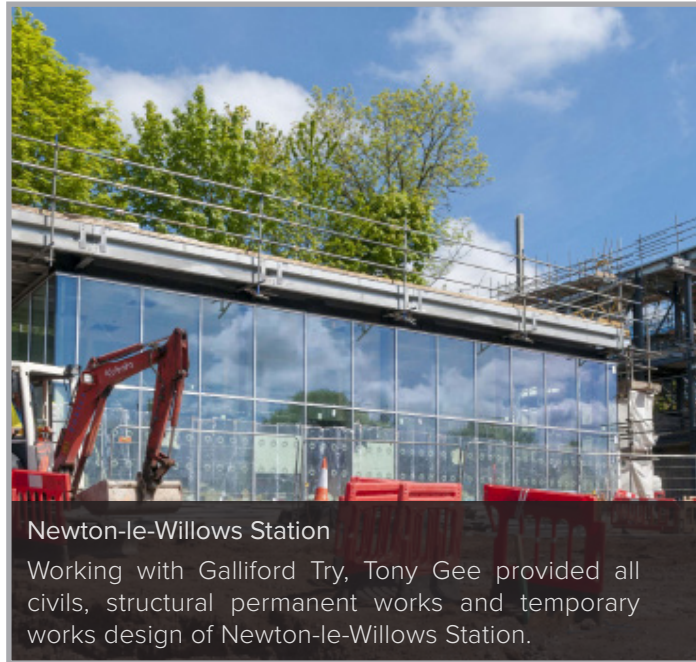
Tuen Mun Chek Lap Kok, Hong Kong-Zhuhai-Macao
Tony Gee provided an alternative design for the marine section of the 11 span, 9km long viaduct.



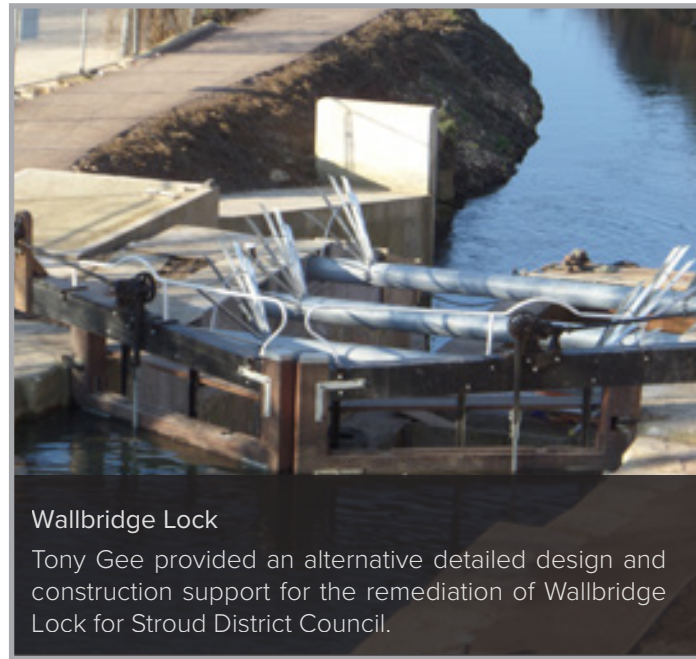
Brechfa Wind Farm
Tony Gee completed the detailed design for the civil, structural and geotechnical aspects for Farrans as part of the award winning Brechfa Wind Farm.



Dover Western Docks Revival
Tony Gee is the lead designer for VolkerStevin and Boskalis Westminster on the £115m redevelopment of Dover Western Docks for The Port of Dover.



Newton-le-Willows Station
Working with Galliford Try, Tony Gee provided all civils, structural permanent works and temporary works design of Newton-le-Willows Station.



Wallbridge Lock
Tony Gee provided an alternative detailed design and construction support for the remediation of Wallbridge Lock for Stroud District Council.

Student and Apprentice Week 2019

Annually, Tony Gee offers a unique experience to the future talent of the business. During the summer months, whilst most students are enjoying their work placements across the UK offices, a week is set aside for a number of learning activities to enhance the understanding of the wider world of construction away from the design office. It is also an opportunity to network with other students who will be their colleagues in the years to come.



2019's week was a great success. With four groups of students and apprentices visiting a number of sites around the UK. In order to ensure as little time is wasted and the groups are manageable, we split our cohort regionally and set them on their way to construction sites, major projects and facilities of interest for the first three days. This year we had groups team up from Manchester and Glasgow, Stonehouse and Birmingham with St Albans and Ashford teaming up with two groups from the Esher office.

For the final two days of the week, we gathered everyone together for a two day themed conference in Birmingham where they could share their experiences and learn more about the business from senior directors and other members of the Tony Gee team.

The groups were spoiled this year with our clients and suppliers enabling our team to see amongst others:

- 22 Bishopsgate and Battersea Power Station
- Nu Steel, Google HQ in London
- M21 J10, Worcester Link Road
- Wolverhampton Station
- HS2 and MMA
- Glasgow Queen Street Station and Buxton Crescent
- Thames Tideway
- Luton Dart
- White Hart Lane Station
- Buxton Station and M6 Spaghetti Junction
- Strathclyde University
- Harrison's Steelwork Fabricators and;
- various platform extension projects



This year our conference was themed around Sustainability. Exercises were designed to stretch their grey matter and a unique approach to brainstorming our future strategy with our Sustainability Director was very well received. It was really great to see the future of the business engaging in the subject so passionately and fantastic to witness their passion translated to legitimate strategy for the future of the business.

For more information visit:
tonygee.com/projects



Watch the Student Week video at tonygee.com/careers/students